

## Tackling health inequalities in primary care

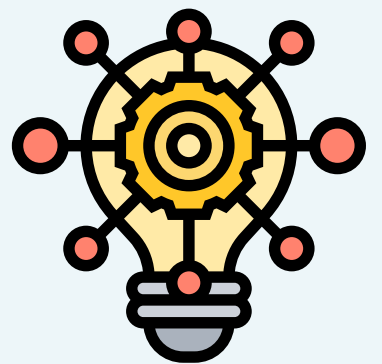
Primary care has a crucial role in tackling health inequalities. Every GP has their own individual sphere of influence to make a positive change.



Tackling health inequalities must be central to a PCN and ICS's mission and operations, and the workforce need to be equipped with the skills and knowledge to achieve meaningful change.

This can be achieved through:

- earlier and broader staff training, particularly in the Core20PLUS5 approach
- active involvement of patients to share their lived experiences
- promotion of health inequalities as core quality improvement projects
- visible and accountable leadership across the PCN and ICS
- developing a shared learning culture promoting best practice
- valuing the part that Additional Roles play in tackling health inequalities



## Current challenges

The absence of shared information on clinical records regarding social determinants of health hinders decision making and meaningful personalisation of care.

The absence of an equity lens in the deployment of the Additional Roles in primary care may be exacerbating health inequalities.



## Creating a diverse workforce

The workforce needs to represent the communities we serve in order to build trust and understanding. Proactive recruitment through apprenticeship and collaboration with schools may help widen participation. In-house training of members of the community may also be beneficial.

